



# GMT MONTHLY MEMBERSHIP PROGRESS REPORT

Results as of: 5/31/2019

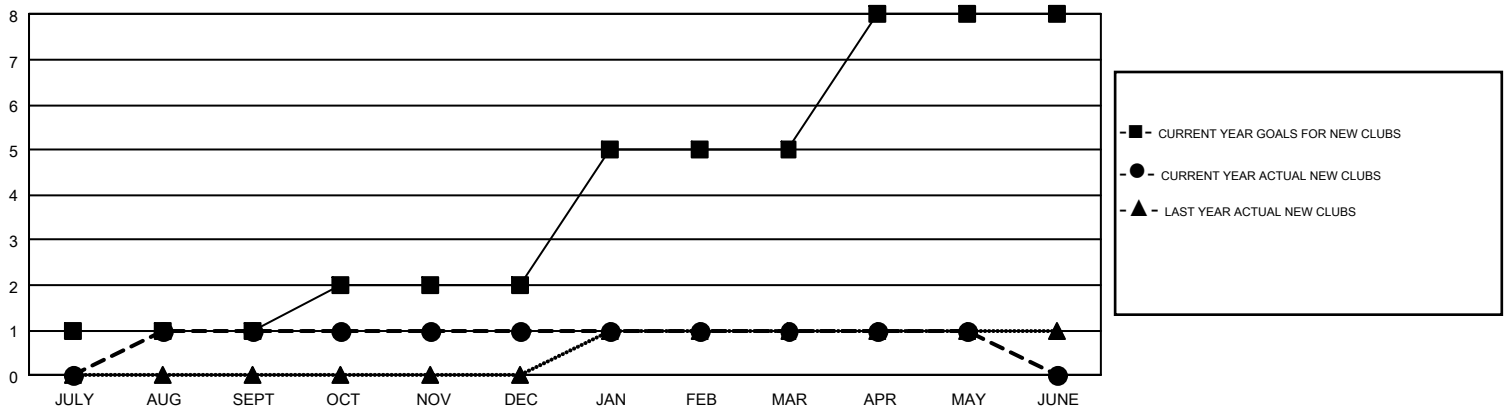
## GMT Constitutional Area 7, Group B

GMT: CLIFFORD HEYWOOD

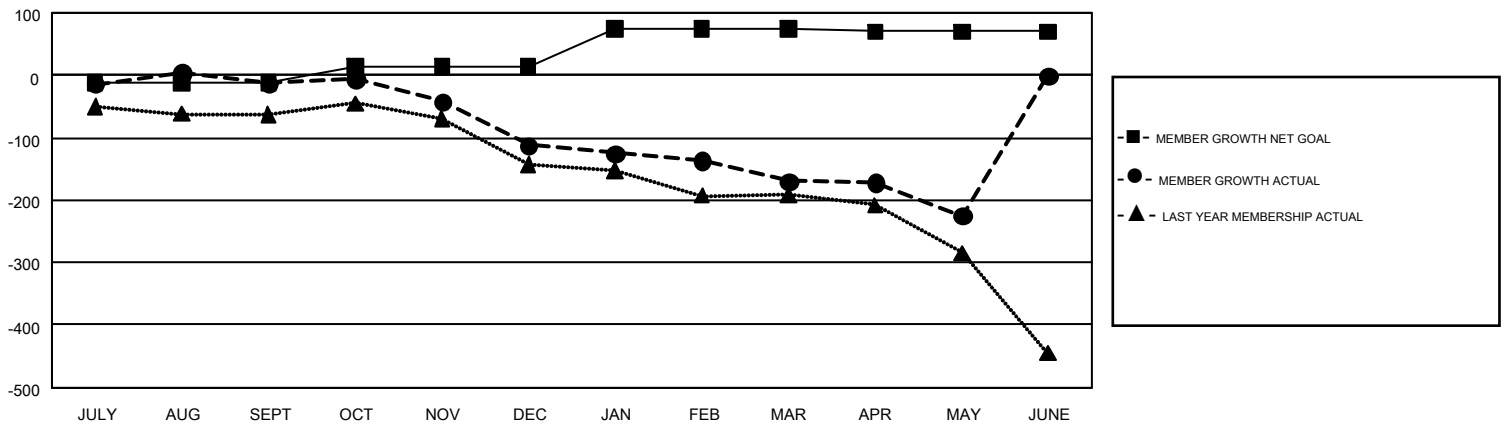
REPORT DOES NOT INCLUDE CLUBS IN UNDISTRICTED AREAS.

Clubs				Members			
RESULTS FOR 2018-2019				RESULTS FOR 2018-2019			
QUARTER	NEW CLUB GOAL	NEW CLUBS	DROPPED CLUBS	QUARTER	MEMBER GROWTH NET GOAL	MEMBER GROWTH ACTUAL	DROPPED MEMBERS ACTUAL (including transfers)
JULY/AUG/SEPT	1	1	5	JULY/AUG/SEPT	-12	195	181
OCT/NOV/DEC	1	0	0	OCT/NOV/DEC	25	150	234
JAN/FEB/MAR	3	0	3	JAN/FEB/MAR	62	126	168
APR/MAY/JUNE	3	0	1	APR/MAY/JUNE	-5	184	222

GOALS AND ACTUAL NEW CLUBS CUMULATIVE



GOALS AND ACTUAL MEMBERS CUMULATIVE



DROPPED CLUBS: 9	215 CLUBS OF 352 ADDED 1 OR MORE NEW MEMBERS	<b>GENDER DISTRIBUTION</b>
<b>DROPPED MEMBERS</b>		MALE            6,431 (69.17%)
DECEASED            128		FEMALE        2,867 (30.83%)
CLUB CANCELLED      21	<a href="#">CLICK HERE FOR CUMULATIVE MEMBERSHIP DATA</a>	TOTAL FAMILY UNIT MEMBERS            828
OTHER                    655		FAMILY MEMBERS PAYING HALF DUES            419
<b>TOTAL                    804</b>		